

4

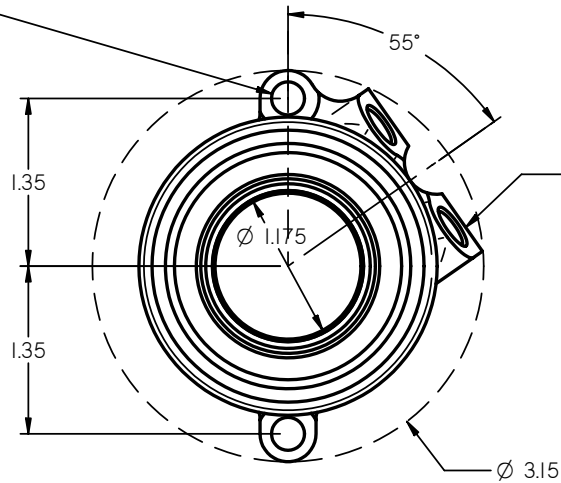
3

2

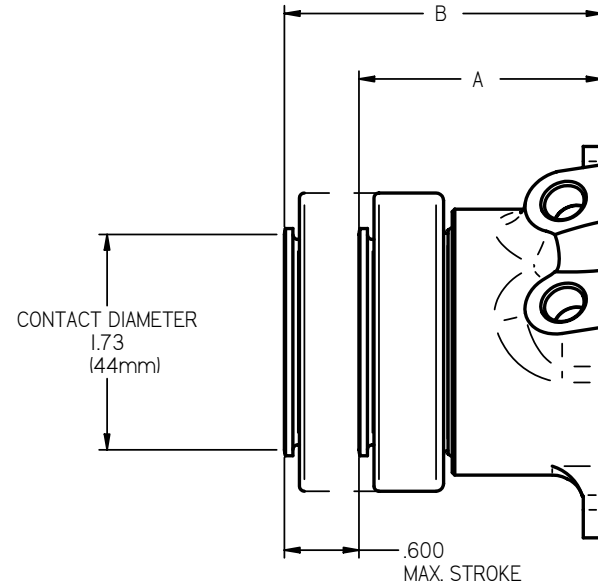
1

ZONE	CHKD	DATE	REV	ECN	CHANGE OR ADDITION
------	------	------	-----	-----	--------------------

Ø .266  
ACCEPTS 1/4 AND  
6mm FASTENERS

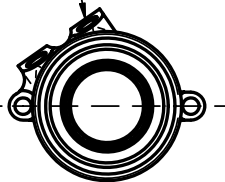


AN-3 PORT, 3/8-24 UNF THREADS.  
PORTS WILL ALLOW STRAIGHT AND  
BANJO FITTINGS. 2 PL.



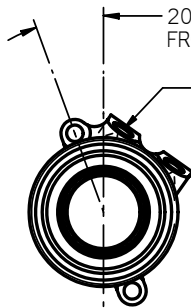
BLEED PORT

BOLT HOLES +- 5°  
FROM HORIZONTAL.



20° ±5  
FROM VERTICAL

BLEED PORT



POSITION IN ONE OF TWO  
ORIENTATIONS FOR PROPER  
BLEED PORT SET UP.

PART NUMBER	SET UP HEIGHT "A"	EXTENDED HEIGHT "B"
6I-9002	1.95	2.55
6I-9012	2.02	2.67

- NOTES:
- DIMENSIONS IN INCHES EXCEPT WHERE NOTED.
  - HYDRAULIC AREA: .93 IN<sup>2</sup>
  - SELF ADJUSTING FOR CLUTCH WEAR.
  - USE BEARING P/N 62-031

TOLERANCES: UNLESS SPECIFIED OTHERWISE	
<u>DRILL HOLES</u>	
.X ± .020	.013-.040: +.001/-001
.XX ± .010	.041-.130: +.002/-001
.XXX ± .005	.131-.229: +.003/-001
FRACT ± 1/32	.230-.500: +.004/-001
ANGLE ± 1/2°	.501-.750: +.005/-001
CONC(TIR) .005	.751-1.000: +.007/-001

MAT'L  
SPEC  
COND  
HARD

FINISH  
SPEC

TILTON ENGINEERING, INC. FAX 805/688-2745  
25 EASY STREET, P.O. BOX 1787, BUELLTON, CA 93427 805/688-2353

TITLE: ASSEMBLY, HYDRAULIC RELEASE BEARING  
9000 SERIES

DRAWN BY CHAMBERS	CHKD	SCALE 1 : 1	DWG 4940
P/N SEE TABLE	DATE 4/15/05	SHEET 1 OF 1	

\*This document contains proprietary information of TILTON ENGINEERING, INC. and its receipt or possession does not constitute an offer, approval, or authorization for manufacture, use or sale of anything it may describe. Reproduction, disclosure, or use without specific written authorization of TILTON ENGINEERING INC. is strictly forbidden.

**TILTON ENGINEERING**